



zencash

Arizen Wallet v1.1.4

User Guide Manual

Created by @Tigger

March 4, 2018

Contents

Table of Contents	i
1 Arizen Wallet v1.1.4	1
1.1 Downloading and installing on computer	2
1.2 Register and Login	2
1.3 Manual back-up	5
1.4 Automatic pruning of old back-ups	7
1.5 Private keys	8
2 Transactions	11
2.1 Overview	11
2.2 Deposit	14
2.3 Withdraw	15
2.4 Batch Withdraw	18
2.5 Transaction History	22
3 Settings and updates	23
3.1 Settings	23
3.2 Update	26
3.3 Paper Wallet	27
4 Technical support	30
4.1 Help menu	30
4.2 About and thanks to the team	31

Chapter 1

Arizen Wallet v1.1.4

Arizen is ZEN API lightweight wallet (you don't need to store and synchronize whole blockchain locally) with encrypted and locally stored files, it supports T addresses and transactions. It supports multiple accounts at one computer, it is distributed to Windows, Linux and MacOS platforms (only desktop and x64 variants). Arizen is automatically updated when new update is released, it has many other features and it is actively developed and maintained.

Main features of Arizen Wallet v1.1.4:

- Automatic pruning of old backups (maximum of 25 last backups). See Section [1.4](#).
- Warning messages in critical steps were added and their meaning is noticed in Section [1.3](#), [1.5](#).
- Import and export your private keys. See Section [1.5](#).
- Import single Private Key via GUI. See Section [1.5](#).
- Batch withdrawal functionality has been reworked. So if you choose more than 10 selected addresses they are divided into transactions where every transaction has exactly 10 addresses and for every transaction you pay only one fee. See Section [2.4](#).
- Arizen has been translated into 18 languages. For version v1.1.4 we added another ones. See Section [3.1](#)).
- Your total balance is shown in selected fiat currency with the actual exchange rate. See Sections [2.1](#) and [3.1](#).
- Paper wallet - you can create QR codes (private key and address) which can be exported into PDF file and printed. This created address can be included in your Arizen Wallet or not. See Section [3.3](#).
- Introducing of Help menu. See Section [4.1](#).

- Settings for disabling notifications. See Section 4.1.

1.1 Downloading and installing on computer

The latest version of Arizen wallet can be downloaded [here](#). On this web page you should find the last version of Arizen wallet. It is labeled by **Latest release**, see Fig.1.1. Here you can download the installation file for your OS and install it as you can see in Fig. 1.2.

Please note that installation is possible only on x64 desktop platforms.



Figure 1.1: Label which shows the latest version of Arizen wallet.



Figure 1.2: You can download installation file for your computer from GitHub.

1.2 Register and Login

If you successfully installed the Arizen wallet, you can launch the program by clicking on Arizen icon. You will be asked for *Create wallet*, if you have never created a ZEN wallet before, or *Login* (see Fig. 1.3). In both case you will be asked for filling your *Username* having at least four letters (see Fig. 1.4) and *Password* which has to meet requirements shown in Fig. 1.5.

Please note that your account/file is encrypted and stored ONLY in your local system - backup is strongly recommended!

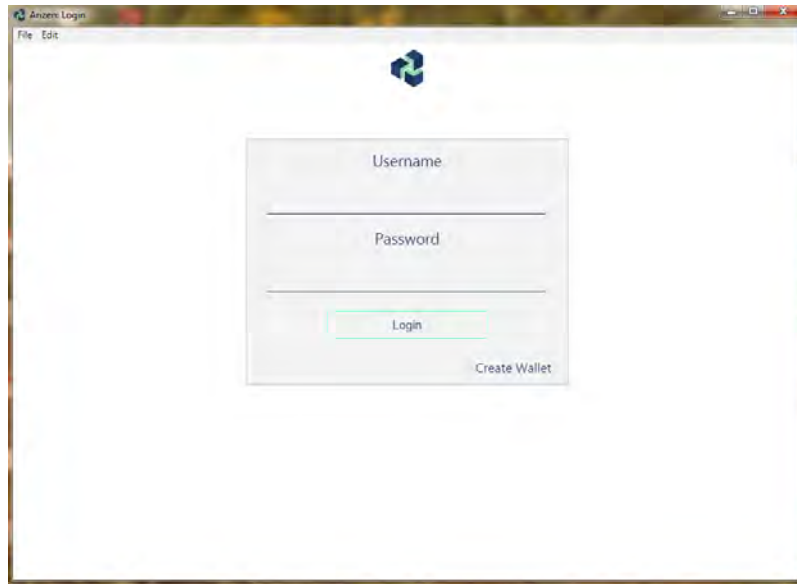


Figure 1.3: Login form of Arizen wallet v1.1.4.

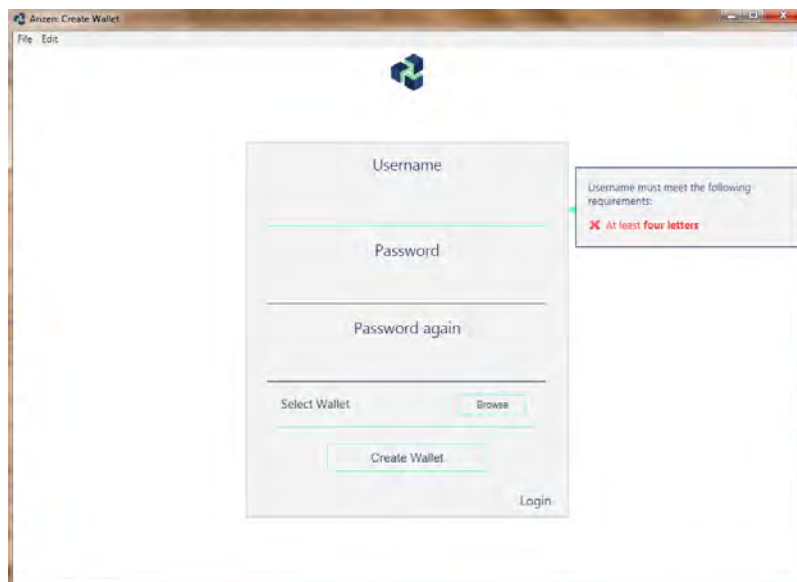


Figure 1.4: Register form for Arizen wallet v1.1.4. Username has to have at least four letters.

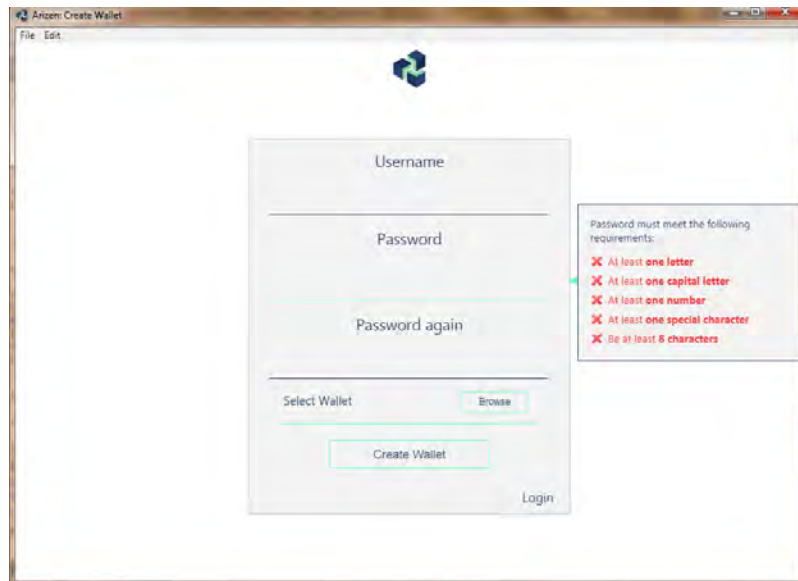


Figure 1.5: Password has to fulfill strict requirements.

If you've already created a wallet before you can import it. The wallet can be saved as **.uawd* (unencrypted Arizen wallet database) or **.awd* (Arizen wallet database = encrypted) file, see Fig. 1.6, 1.7. You can choose the file by clicking on button *Browse*. If you have an imported wallet in **.awd* format, you have to fill your *Old Username* and *Old Password*.

Please note that path to user's wallet seems to be odd but it's completely normal behavior. See Fig. 1.8, 1.9.

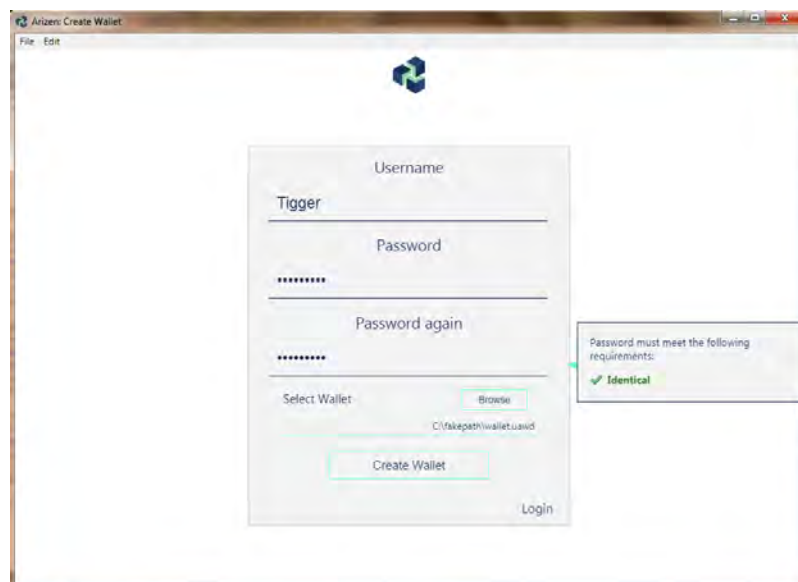


Figure 1.6: You can choose your wallet in **.uawd*.

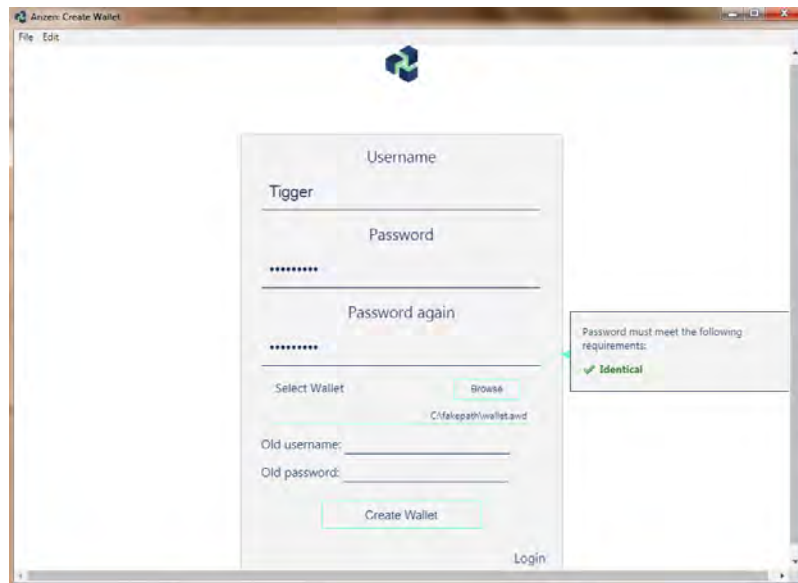


Figure 1.7: You can choose your wallet in **.awd*.

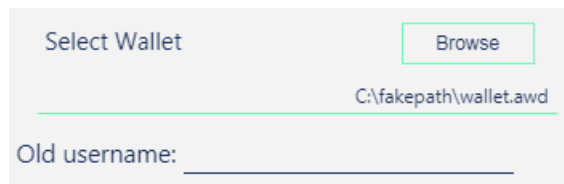


Figure 1.8: The path to user's wallet seems to be odd but it's common behavior.

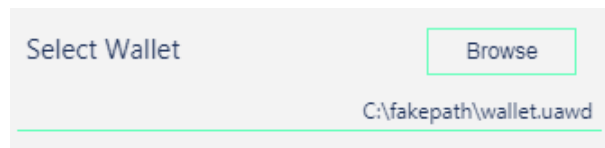


Figure 1.9: The path to user's wallet seems to be odd but it's common behavior.

1.3 Manual back-up

Arizen wallet has a great feature for making back-ups of your wallets. And we significantly recommend you to use it. If you're logged in, you can export or import your wallet in **.uawd* or **.awd*. This process causes that you manually create a back-up file of your wallet or you import the back-up wallet into Arizen. Click on icon *File* and choose option *Back-up* or *Import*, see in Fig. 1.10.

If you choose option *Backup ENCRYPTED wallet* you'll see an **important information** on your screen. It informs you that your private keys will be encrypted and in order to access your private keys you need to know the corresponding username and password otherwise you cannot control your ZENs. So, please be aware and confirm that you understand this fact by clicking on *I understand*.

If you choose option *Backup UNENCRYPTED wallet* you'll see an **important information** on your screen. It informs you that your wallet will be export in plain

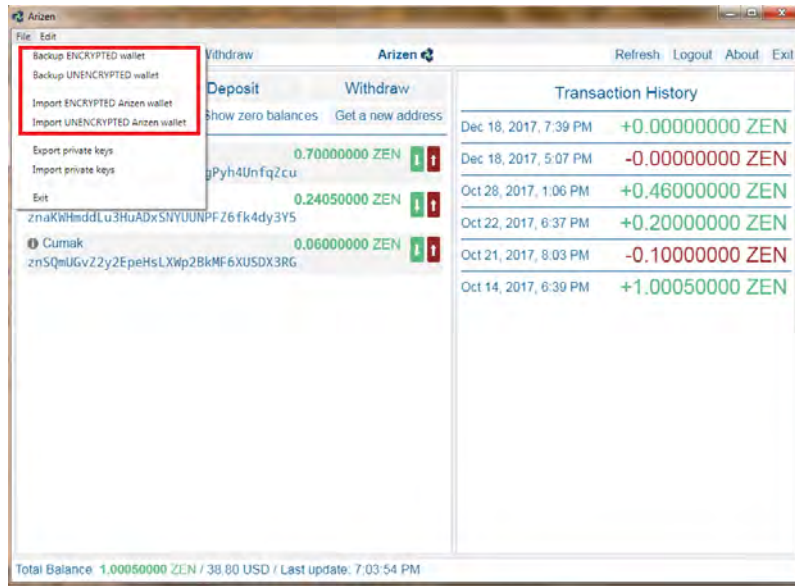


Figure 1.10: Click on *File* to manually create a back-up file of the wallet or import your back-up file into Arizen.

text. It means that everyone who has a file with this text can operate with your ZENs. So please be aware and confirm that you understand this fact by clicking on *I understand*.

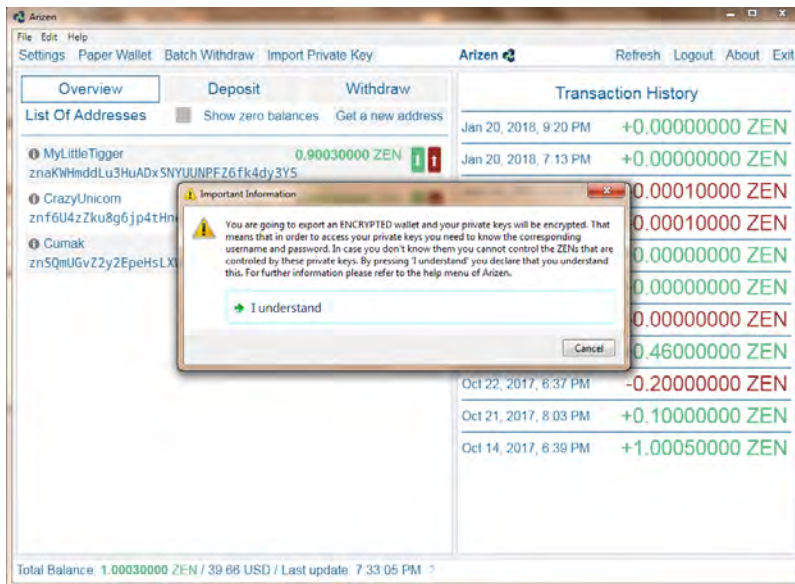


Figure 1.11: A warning which appears if you want to make *Back-up encrypted wallet*. You have to know corresponding username and password to control your ZENs.

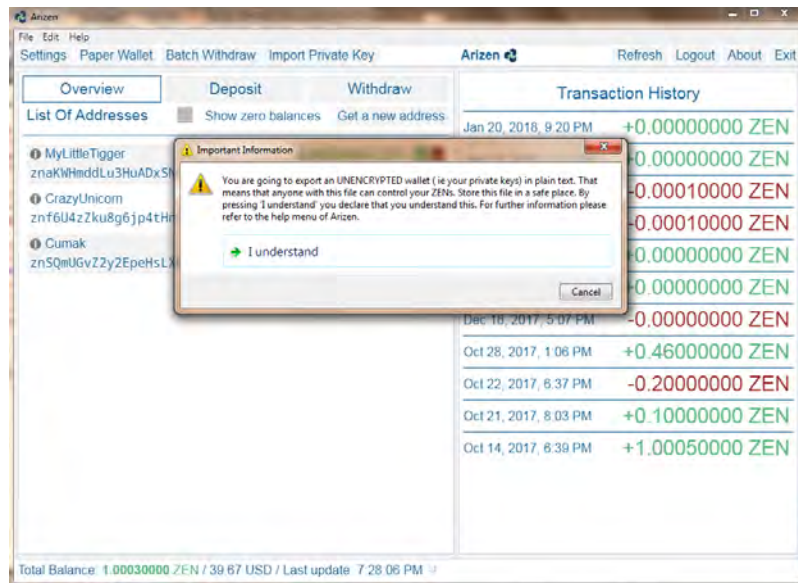


Figure 1.12: A warning which appears if you want to make *Back-up unencrypted wallet*. Your wallet is exported as file with plain text so you should store this file on a safe place.

1.4 Automatic pruning of old back-ups

Arizen offers a new cool feature which is Automatic pruning of old back-ups. If you use Arizen wallet the back-ups are stored automatically and there are previous 25 back-ups, see Fig. 1.13.

You can find your back-ups in these locations:

- **Linux:** `~/arizen/wallets/backups`
- **Windows:** `C:\Users\username\AppData\Roaming\Arizen\wallets\backups`
- **MacOS:** `/Users/username/Library/Application Support/Arizen/backups`

<input type="checkbox"/>	Tigger-20180116220548.awd	16.1.2018 22:05	AWD File	53 KB
<input type="checkbox"/>	Tigger-20180117215708.awd	17.1.2018 21:57	AWD File	53 KB
<input type="checkbox"/>	Tigger-20180118195949.awd	18.1.2018 19:59	AWD File	53 KB
<input type="checkbox"/>	Tigger-20180120115512.awd	20.1.2018 11:55	AWD File	53 KB
<input type="checkbox"/>	Tigger-20180120115554.awd	20.1.2018 11:55	AWD File	53 KB
<input type="checkbox"/>	Tigger-20180120144304.awd	20.1.2018 14:43	AWD File	53 KB
<input type="checkbox"/>	Tigger-20180120144347.awd	20.1.2018 14:43	AWD File	53 KB
<input type="checkbox"/>	Tigger-20180120144809.awd	20.1.2018 14:48	AWD File	53 KB
<input type="checkbox"/>	Tigger-20180120145224.awd	20.1.2018 14:52	AWD File	53 KB
<input type="checkbox"/>	Tigger-20180120211035.awd	20.1.2018 21:10	AWD File	53 KB
<input type="checkbox"/>	Tigger-20180121115431.awd	21.1.2018 11:54	AWD File	53 KB
<input type="checkbox"/>	Tigger-20180303124620.awd	3.3.2018 12:46	AWD File	53 KB
<input type="checkbox"/>	Tigger-20180303124959.awd	3.3.2018 12:50	AWD File	53 KB

Figure 1.13: Example of last 25 automatic back-ups.

1.5 Private keys

Cool feature which was introduced in a previous version of Arizen wallet was an option to export or import **Private keys**. In Arizen wallet v1.1.4 you have two possibilities:

- **Export or Import private keys** – You can use this option if you want to export or import more than one private key. If you want to import/export, click on *File* in the toolbar. There are options *Export private keys* and *Import private keys*, as you can see in Fig. 1.14. The Private keys are exported in **.txt* format and can be imported in the same format.

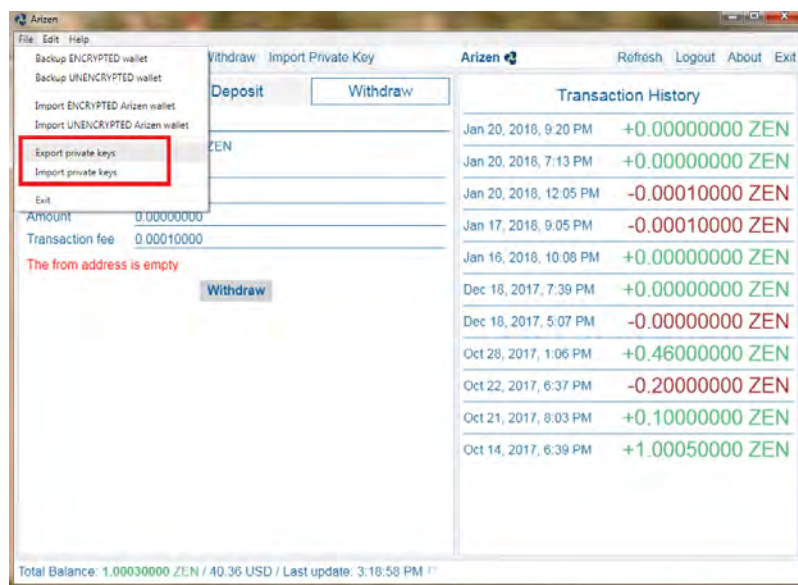


Figure 1.14: If you want to export or import more than one private key you can click on *File* and then choose *Export private keys* or *Import private keys*.

Please note that Private keys can be exported as a string in *WIF* format (given in Swing Wallet) and imported as a string in *WIF* or *HEX* formats, as you can see in Fig. 1.15. (Only one Private key per line is allowed.)

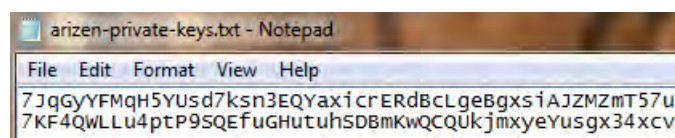


Figure 1.15: An example of two private keys for two addresses.

- **Import Single Private Key** – this option is useful if you want to import only **one single private key**. Click on option *Import Private Key* on upper toolbar, see Fig. 1.16. Then a warning appears, see Fig. 1.17. **This warning**

is very important. See box below. Click on *I understand* in the warning and confirm that you understand what will happen. Then you can choose a name and insert the private key, see Fig. 1.18.

Please note that if you chose option *Import Private Key* a warning appears there, see Fig. 1.17. It informs you that your previous back-ups don't include the newly imported private key. After importing of new private key it is significantly recommended to make a new back-up file!

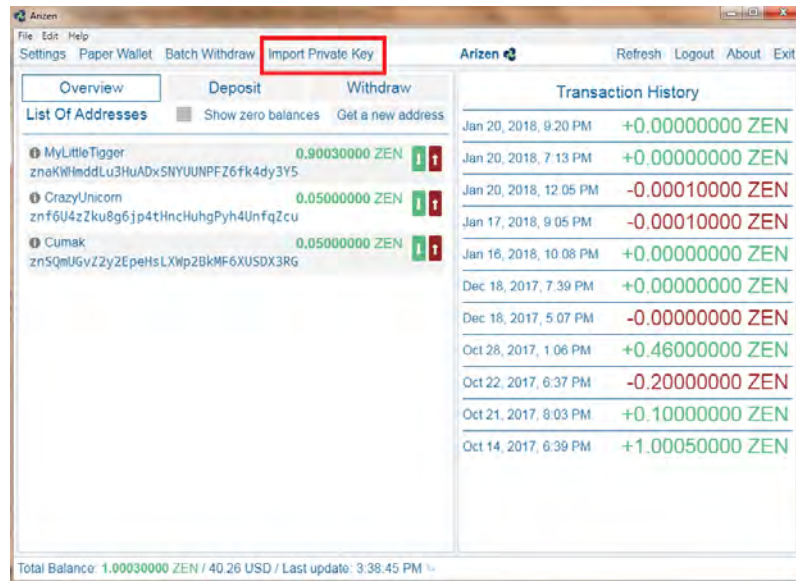


Figure 1.16: New option used for importing **one** private key directly from toolbar.

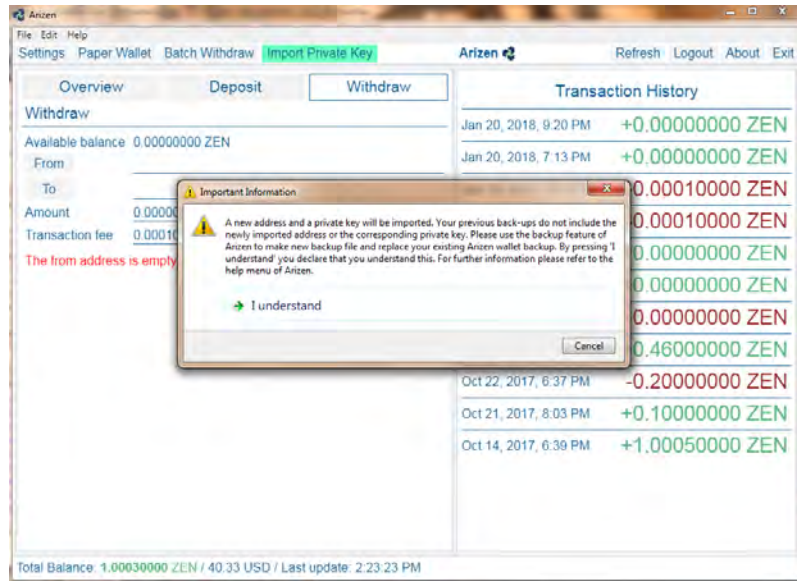


Figure 1.17: Warning which you can see after you click on *Import Private Key*. It informs you that the previous back-up file don't include the newly imported private key. If you click on *I understand* you confirm that you get this fact. **We significantly recommend you to make a new back-up file after that.**

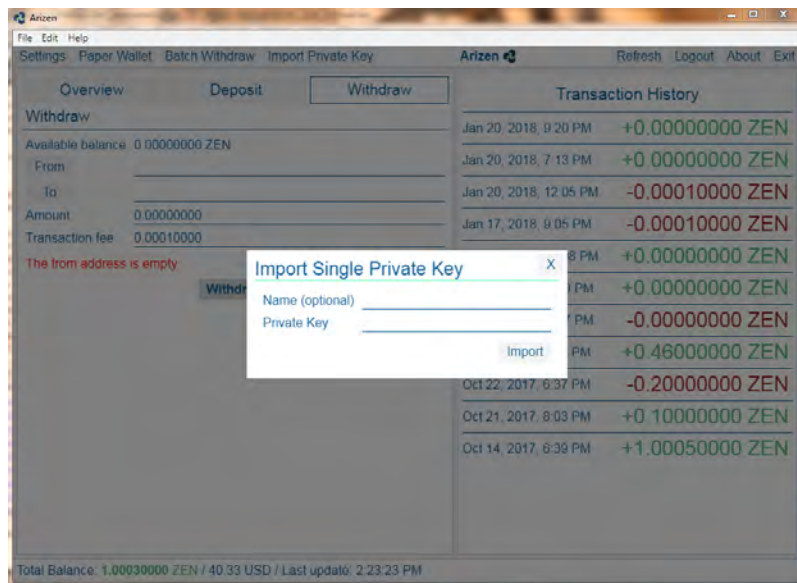


Figure 1.18: If you click on *Import Single Private Key* you can choose the Name and insert the Private Key.

Chapter 2

Transactions

Arizen wallet v1.1.4 offers the opportunity to store a list of your addresses, deposit on them or withdraw or go over your transaction history.

2.1 Overview

In Arizen wallet you can have a list of your non-zero addresses as you can see in Fig. 2.1. You can see your zero balances, too. Just click on *Show zero balances* and then see your List of Addresses as it's shown in Fig. 2.2. For creating a new address click on *Get a new address*. You will choose a name and the address will be automatically generated (see Fig. 2.3) (A newly created address will be shown only if the *Show zero balances* check-box is checked.).

Every address shows you the balance of ZENs (shown in green color). Next to the balance you can see a green and a red arrows. If you click on the green arrow you choose a quick option *Deposit to this address*. If you click on the red arrow you choose a quick option *Withdraw from this address*. How to operate with option Deposit see Section 2.2 and for option Withdraw see Section 2.3.

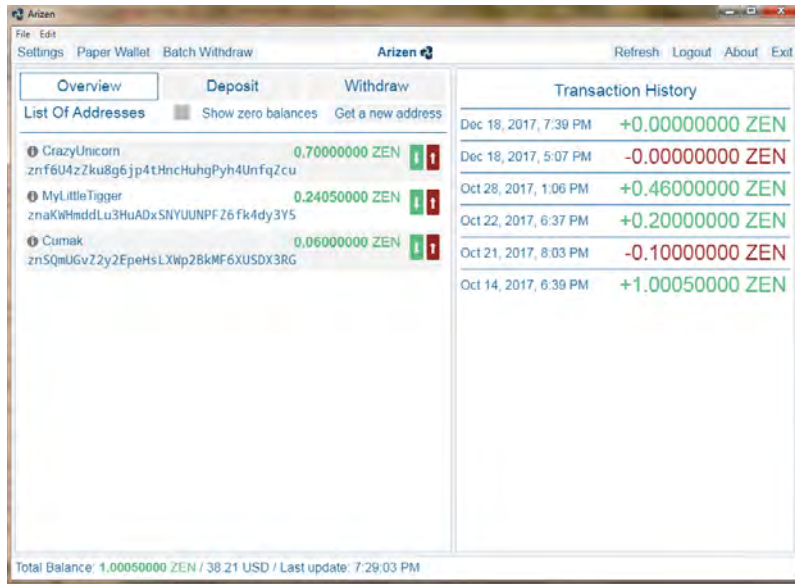


Figure 2.1: Overview with the list of nonzero addresses.

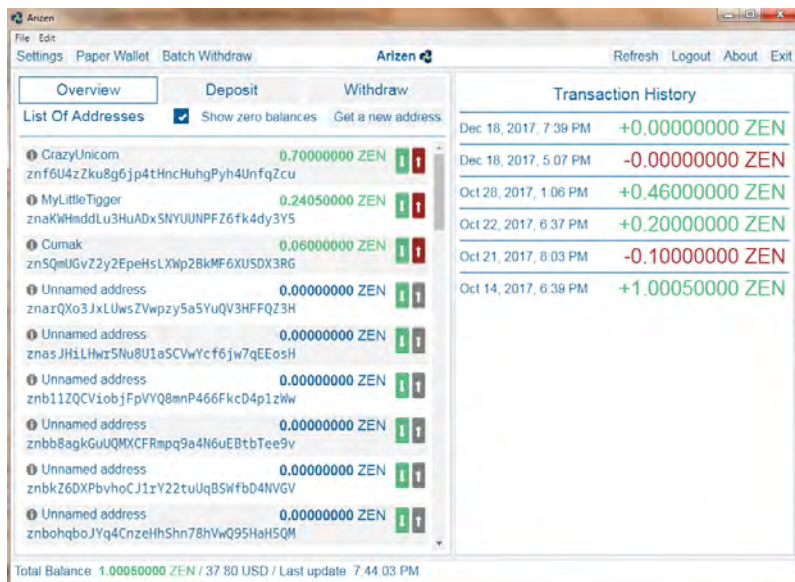


Figure 2.2: Overview with the list of nonzero and zero addresses.

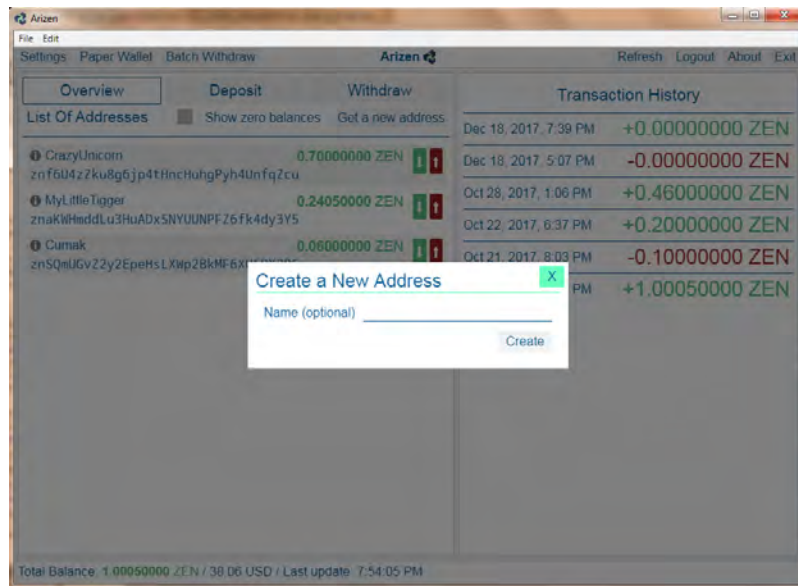


Figure 2.3: You can create a new address and use optional name for it.

Arizen Wallet v1.1.4 offers a new cool feature. In the footer there's a Balance bar. There you can check you Total Balance of ZENs and its equivalent in chosen fiat currency. Also it shows time for last update of the exchange rate (see Fig. 2.4). Look on Section 3.1 to learn how to choose you fiat currency in Balance bar.

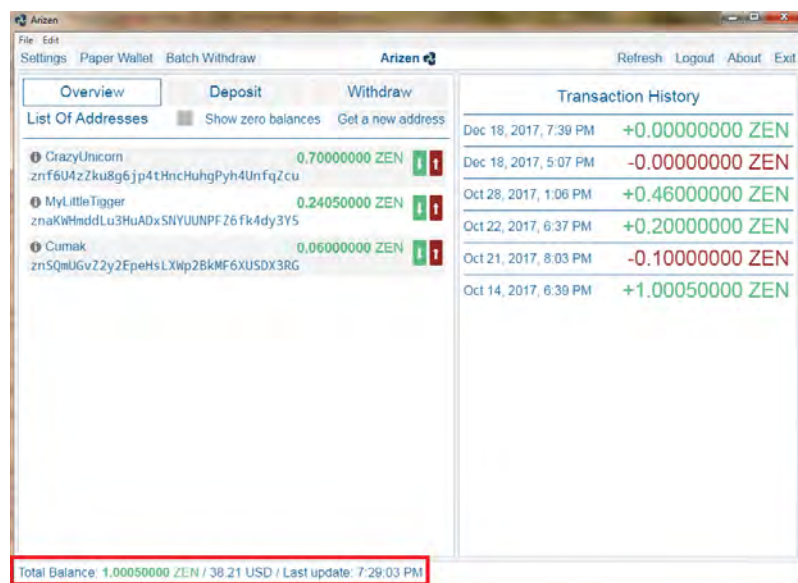


Figure 2.4: You can see your Total Balance, its equivalent in your chosen fiat currency and time for last update of exchange rate.

2.2 Deposit

If you want to receive ZENs from somebody you can use *Deposit*, see Fig. 2.5. It is the easiest way how to do it. Select your address from a list of you non-zero or zero addresses (Fig. 2.6) and set the amount. Then you can generate a QR code. Then you or another persons can use the QR code for quick read the transaction information (destination address and the amount) as it's shown in Fig. 2.7.

New feature is to export QR code in *.pdf format. You can use it in the future or send it to your friend. Just click on *Save QR code* under the symbol of QR code, see Fig. 2.7.

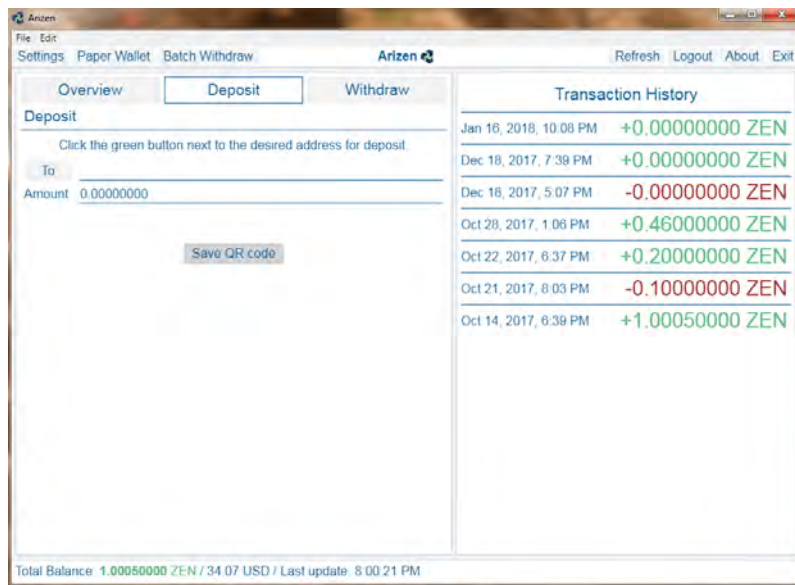


Figure 2.5: In option *Deposit* you can choose the address and amount.

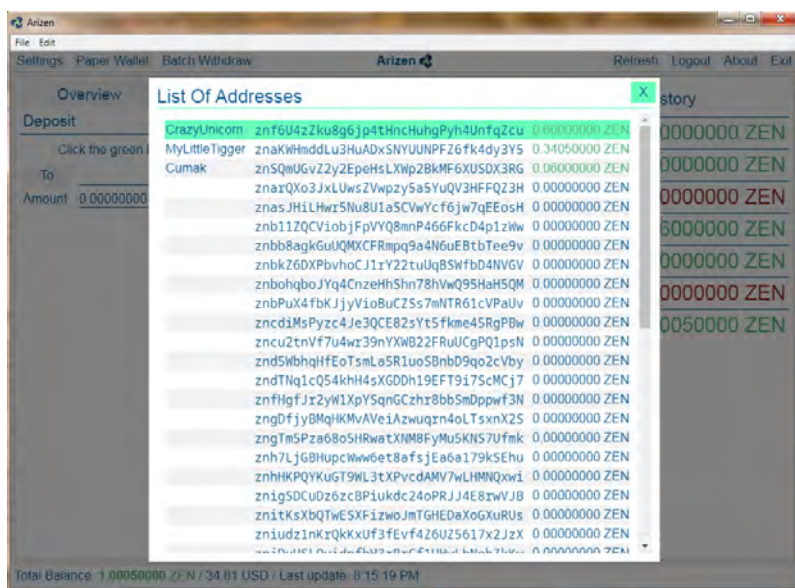


Figure 2.6: List of non-zero and zero addresses which you can choose for depositing.

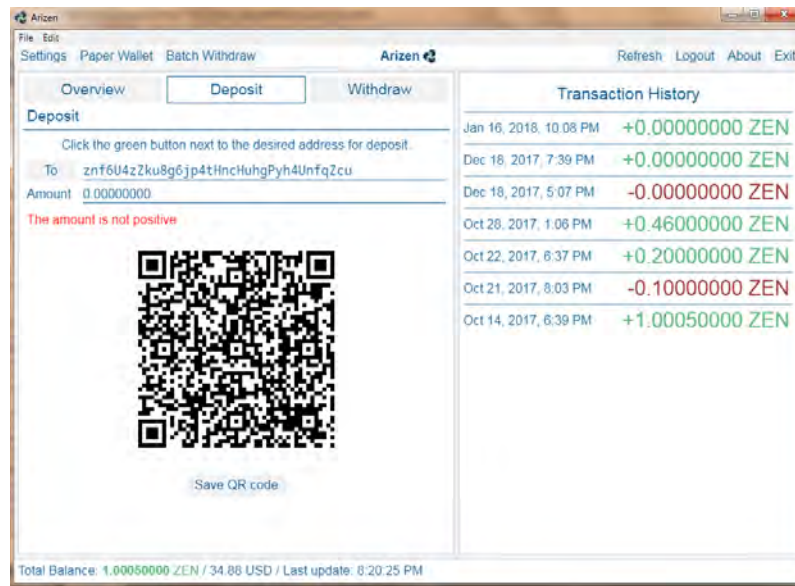


Figure 2.7: You can generate QR code for deposit and this QR code can be saved in **.pdf* format.

2.3 Withdraw

You can send your ZENs via operation *Withdraw*, see Fig. 2.8. You can select one of your addresses as source address in *From* section. There is a list of addresses. Then fill the destination address as *To* and amount of ZENs and then use button *Withdraw*. Before sending the transaction you're asked for confirmation, see Fig. 2.9.

If your transaction is successful, you can see green informative label with transaction ID (see Fig. 2.10) and you can click to the link and open your transaction in your internet browser in the blockchain explorer as it's shown in Fig. 2.11. And you can also see transaction status update bar after confirmation of successful transaction, as you can see in Fig. 2.12. If your transaction isn't successful, you can see red error label with a reason of failure.

Every transaction, you did, is written in *Transaction History*, see Fig. 2.13. When you send ZENs from one of your address to another of your address then the balance of your Arizen wallet remains unchanged, that's why this transactions are +0.00000000 ZEN.

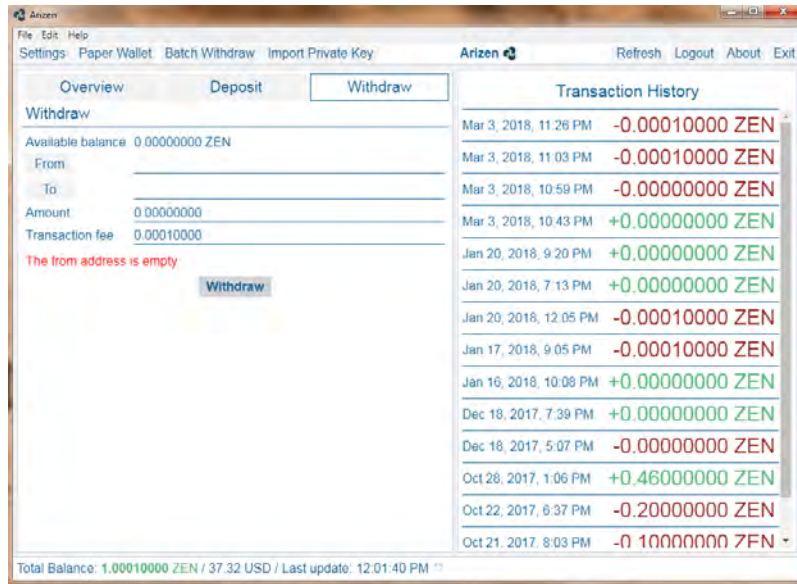


Figure 2.8: Option *Withdraw* allows you to send ZEN from your address to another one.

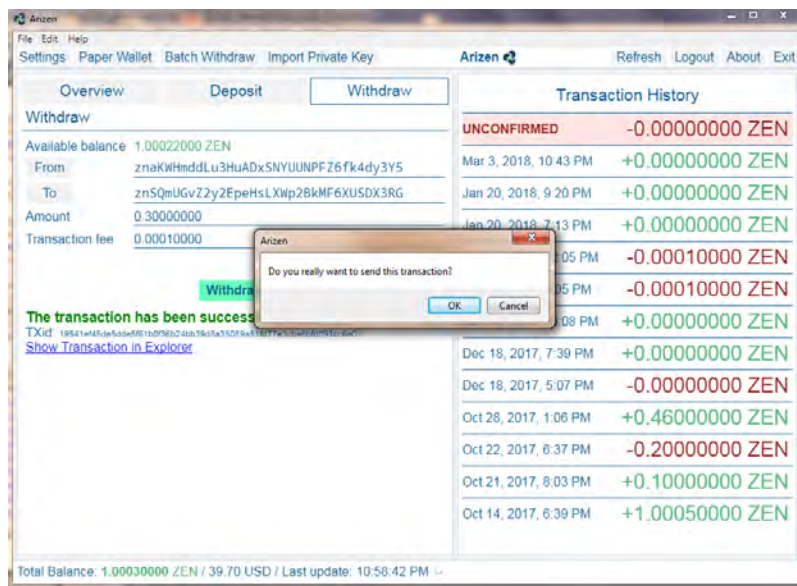


Figure 2.9: You are asked for being sure about sending before the transaction is realized.

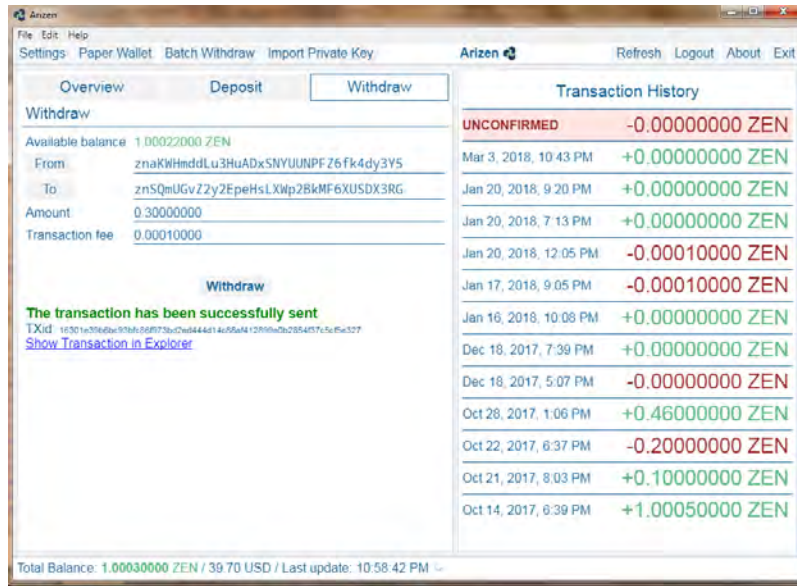


Figure 2.10: If your transaction was successful a green label occurs and you can show your transaction in web browser.

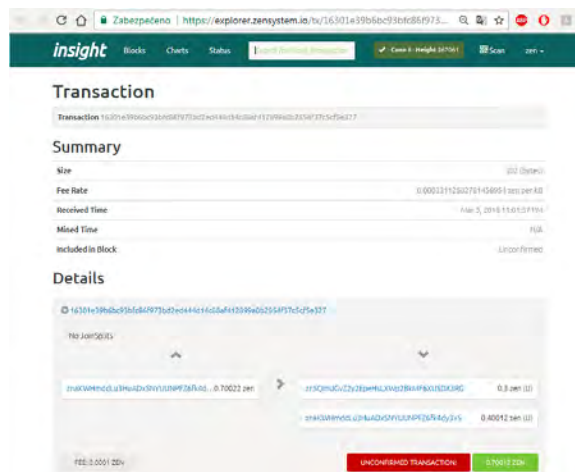


Figure 2.11: You can see the transaction detail in your web browser.

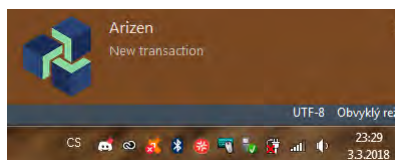


Figure 2.12: If you send a transaction you can see a transaction status update.

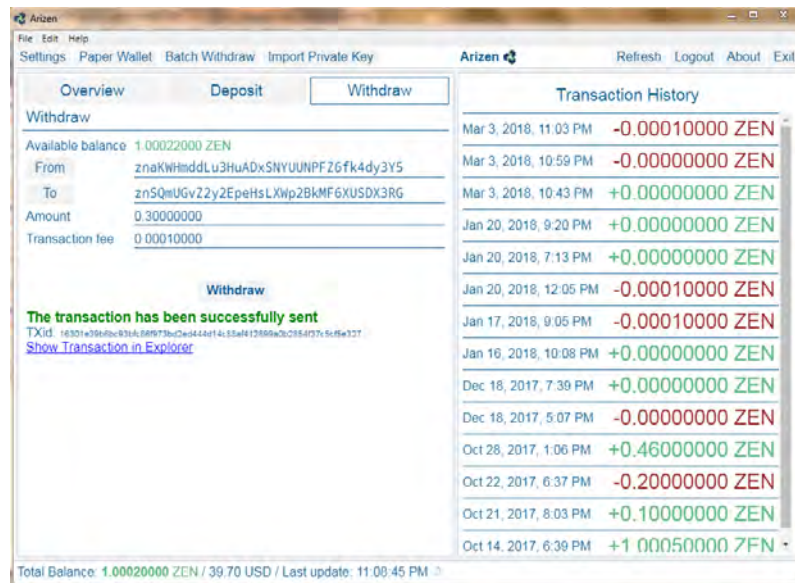


Figure 2.13: When you send a transaction you can see it immediately in transaction history.

2.4 Batch Withdraw

The next amazing feature implemented in Arizen wallet v1.1.4 is *Batch Withdraw*, see Fig. 2.14. This feature has two main use-cases which focus on:

- Security node operators.
- Consolidating your ZENs to one address.

Security node operators: When you are a security node operator you must have 42 ZENs in your staking T-address. When your staking address receives the rewards from operating security node you want to send this reward to another address and keep your 42 ZENs on this staking address. This feature perfectly does that for you. You can select your staking addresses, destination address (where the collected reward will be sent) and the amount to keep (in this case 42 ZENs).

Consolidating your ZENs to one address: In this use-case you can consolidate your ZENs from multiple addresses to one destination address. The process is the same like in the previous example but you must set amount to keep to 0 ZENs.

This functionality has been reworked in version v1.1.4 as following: If it is chosen more than 10 selected addresses then the addresses are divided into transactions where each transaction contains 10 selected addresses. In every transaction there is set a transaction fee. For example 23 selected addresses are divided into 3 transactions ($2 \times 10 + 3 = 3$ transactions, it means 3 x transaction fee).

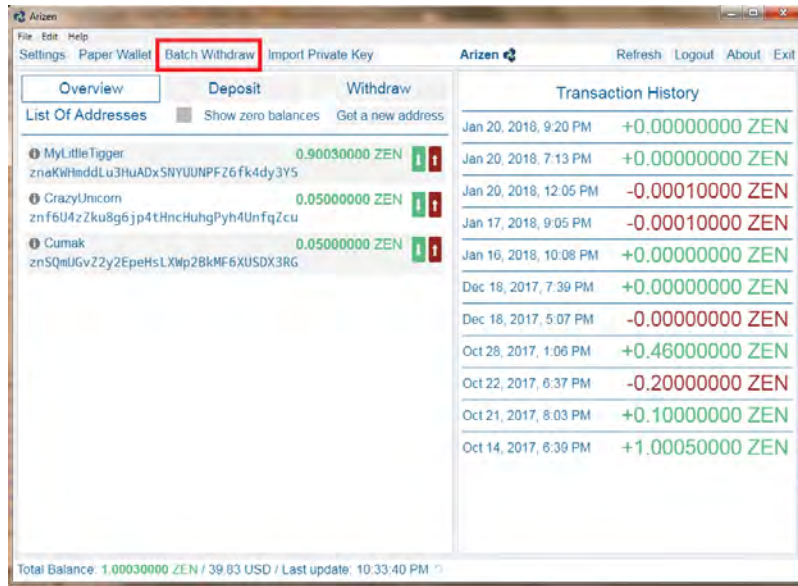


Figure 2.14: Feature *Batch Withdraw* you can find on Tool bar.

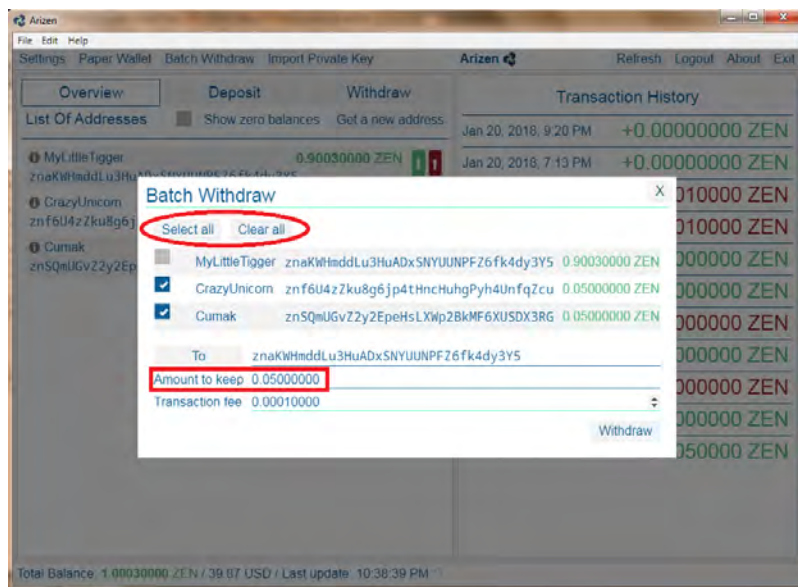


Figure 2.15: You can set the *Amount to keep* (threshold) which means the amount of ZENs which will stay on chosen addresses and the rest will be sent to the destination address (*To*). And you can choose new options *Select all* and *Clear all*.

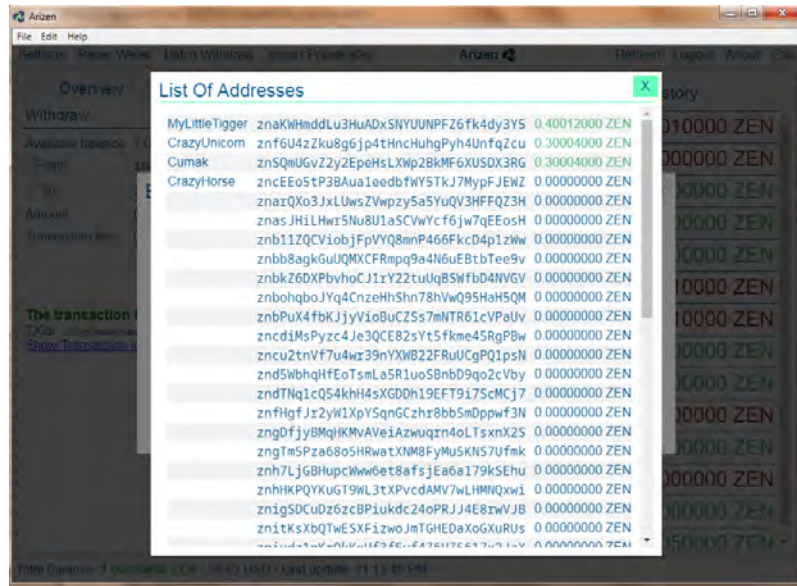


Figure 2.16: You can choose from the list of your addresses.

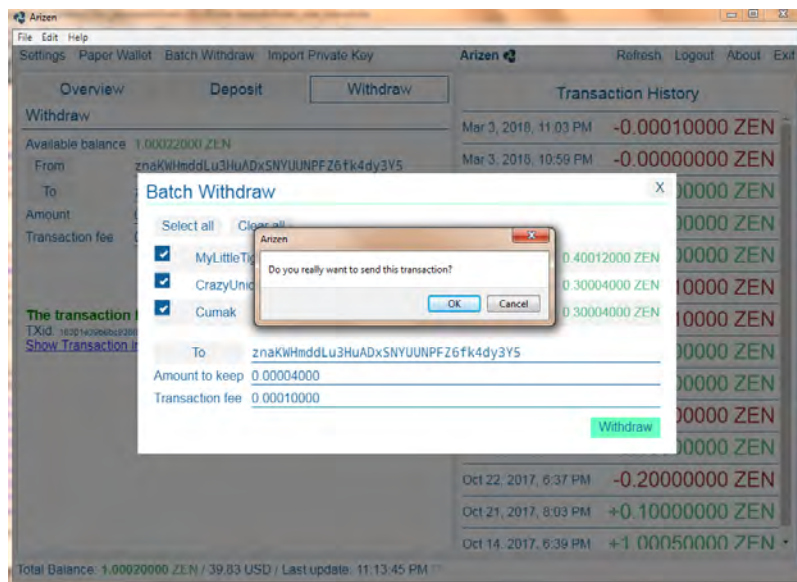


Figure 2.17: You are asked for confirmation before sending the transaction.

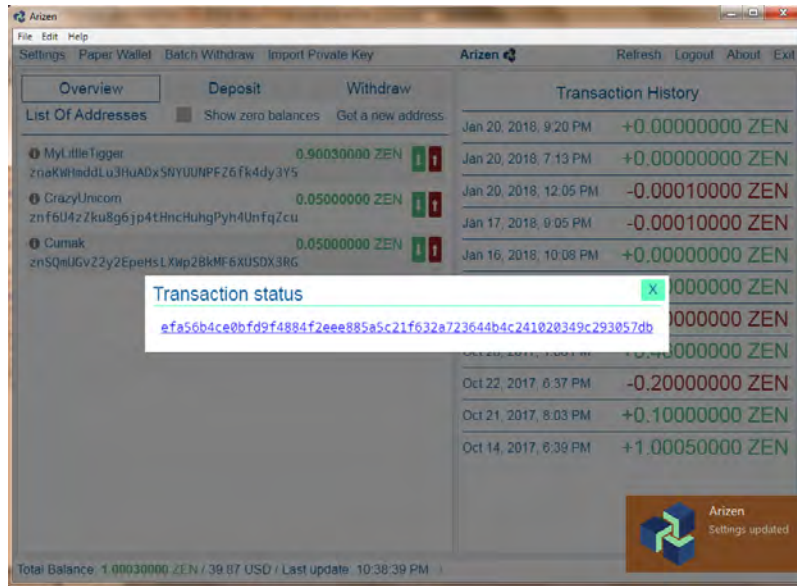


Figure 2.18: If you confirmed the transaction you can see Transaction status, its ID and a link for web browser.

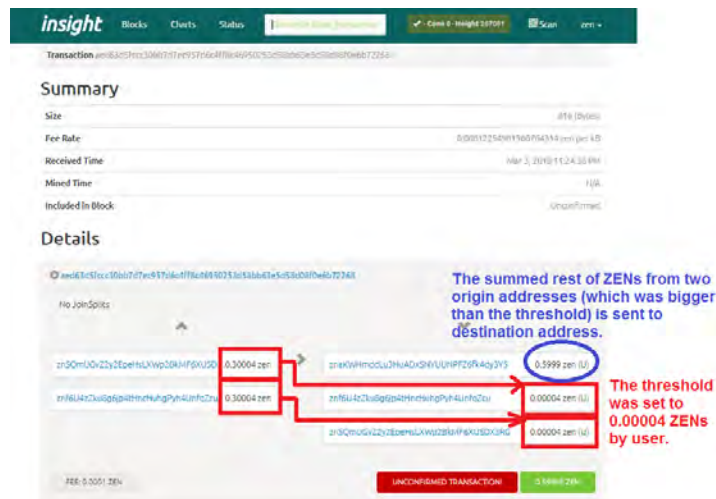


Figure 2.19: User chose two source addresses with balances 0.30004 ZENs and 0.30004 ZENs. The selected threshold (*Amount to keep*) was 0.00004 ZENs. The result of the transaction were the thresholds and the rest of ZENs was transferred to the destination address (*To*).

2.5 Transaction History

Transaction History shows every transaction which were done. If you had done a transaction and it hasn't been confirmed, you can see it with label *Unconfirmed*, see Fig. 2.13. You can click on every single transaction and check Transaction Detail as it's shown in Fig. 2.20.

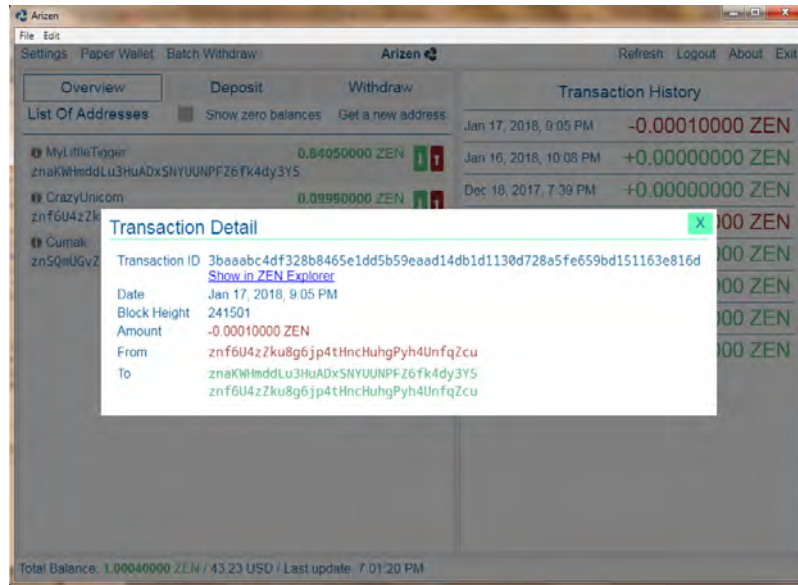


Figure 2.20: You can check Transaction Detail with all important information.

Chapter 3

Settings and updates

3.1 Settings

In Settings you can set Transaction limit, Language, Zen Explorer URL and API URLs and Fiat Equivalent, see Fig. 3.1.

- **Transaction limit** defines the amount of transactions shown in the Transaction history.
- You can also choose the **Language** which is the most suitable one for you.
- The **ZEN Explorer URL** indicates address which is opened when you click on the detail of transaction.
- **API URLs** is used for sending of transactions to blockchain. API URLs can be extended by user. You can add a new address on a new row. The API URLs are tried one by one.
- You can choose one of the defined **Fiat Equivalent**. The chosen Fiat Equivalent is shown in Balance bar, see Fig. 2.4.

Please note that we use the most widely spoken languages. And it's impossible to implement all languages into Arizen wallet.

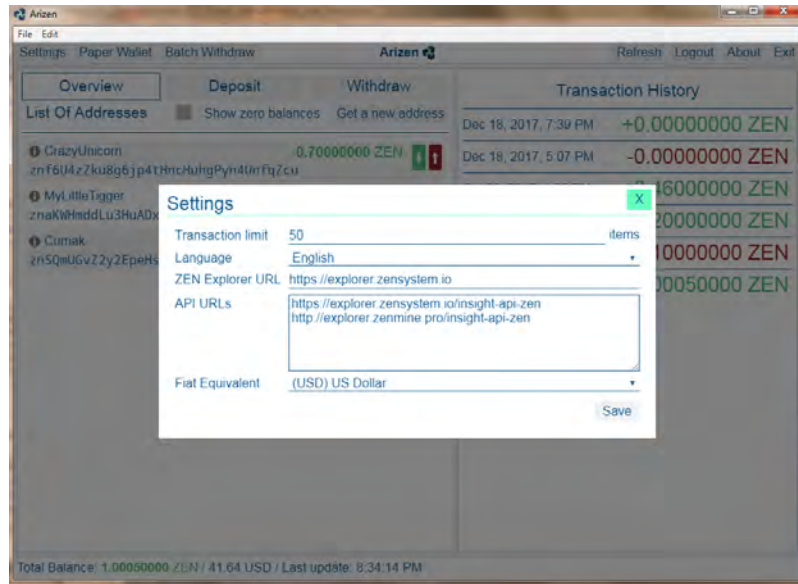


Figure 3.1: In option Settings you can set Transaction limit, Language, Zen Explorer URL, API URLs, and Fiat Equivalent.

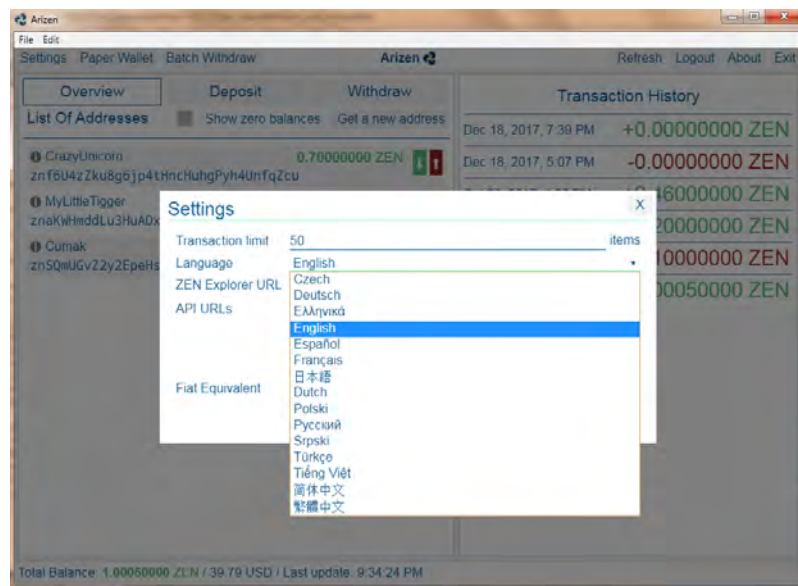


Figure 3.2: You can change language of your Arizen wallet.

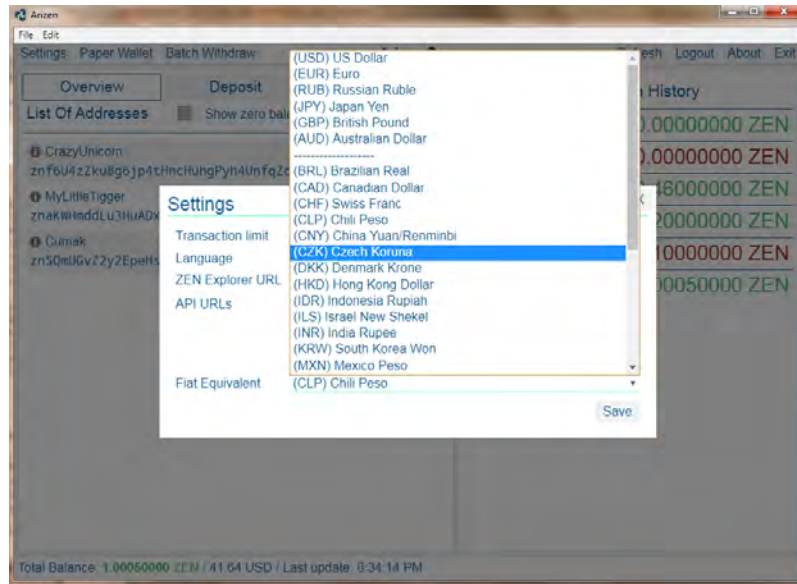


Figure 3.3: You can change your Fiat currency. Just click on *Fiat Equivalent* and choose the perfect one for you ☺.

New feature in *Settings* has been added into v1.1.4. It is *Desktop notifications*. You can turn it on or off, see Fig. 3.4.

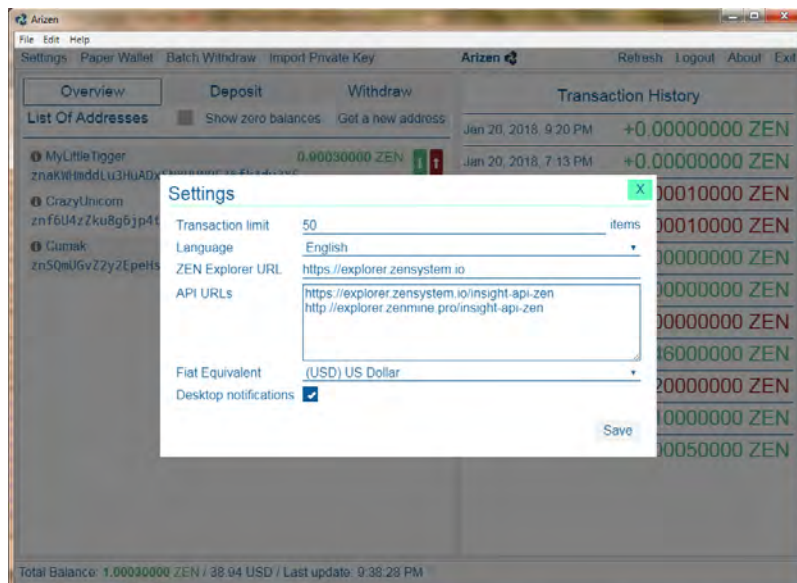


Figure 3.4: You can turn on or turn off the Desktop notifications in *Settings*.

3.2 Update

You don't need to install updates manually. It is done automatically (when new update has been released). When you click on the button *OK* (see Fig. 3.5), **the app is updated and the Arizen wallet is automatically relaunched**. It just takes some time, what depends on your computer. Sometimes you have close the app and relaunch it again.

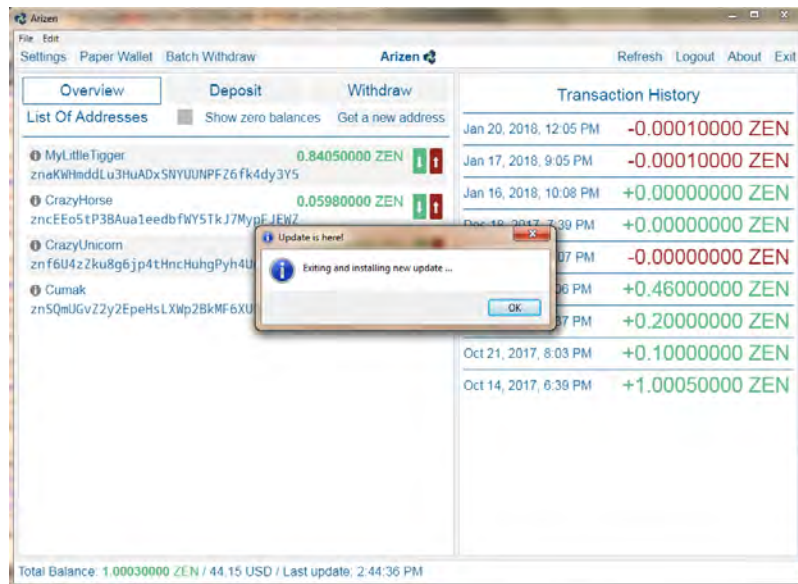


Figure 3.5: If there is available update version you are asked for confirmation of installation - you can't decline or postpone it.

3.3 Paper Wallet

Paper Wallet is a new cool feature, see Fig. 3.6. With option of Paper Wallet you can :

- Export it into **.pdf* format and add it into Arizen, see Fig. 3.7.
- Or only export it into **.pdf* format.

If you add the Paper Wallet into Arizen, you have to choose *Show zero balances* and then you can see it in a list of your addresses, as it's show in Fig. 3.8.

Exporting Paper Wallet into **.pdf* format you receive a document with Private Key in a string format and T-address, see Fig. 3.9.

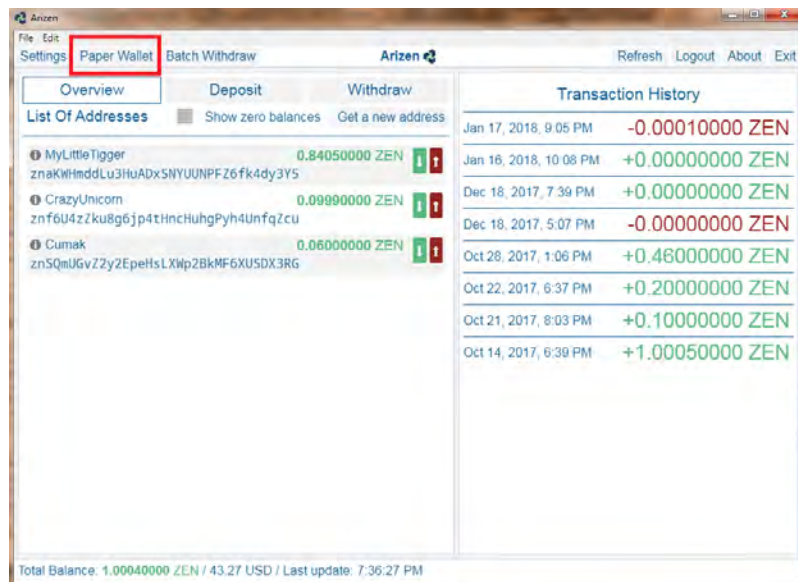


Figure 3.6: New cool feature is a possibility to create a Paper Wallet.

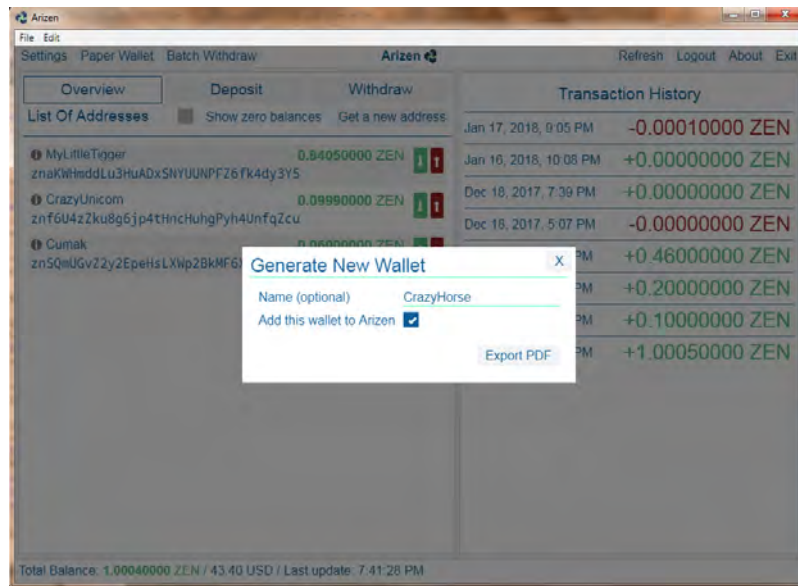


Figure 3.7: You can export your Paper Wallet into **.pdf* format and it's possible to add it into Arizen.

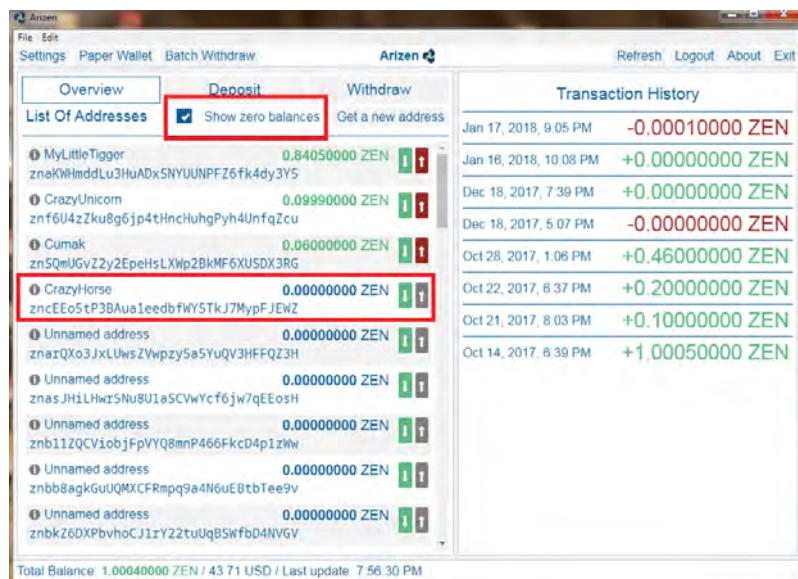


Figure 3.8: If you've chosen *Add this wallet to Arizen*, you can see in *Overview*, just click on *Show zero balances*.



Figure 3.9: Your private key and T-address can be stored in string form and QR code form as *.pdf* file.

Chapter 4

Technical support

4.1 Help menu

New option implemented in the Arizen wallet v1.1.4 is *Help*. You can find it on a toolbar next to option *File* and *Edit*, see Fig. 4.1. There are three options:

- Arizen Manual – this new option can direct you on GitHub webpage where you can download the actual Arizen Manual for version v 1.1.4.
- Support – you can use a service of ZenHelp, the global helpdesk for ZenCash users. You will be kindly ask for signing up and create a free account in order to get in contact with the ZenCash team and receive support. You will also be able track the progress of your requests. Many thanks to ZenHelp team for doing great job!
- ZenCash – explore our official website with all of the possibilities and perks which are offered by ZenCash©.

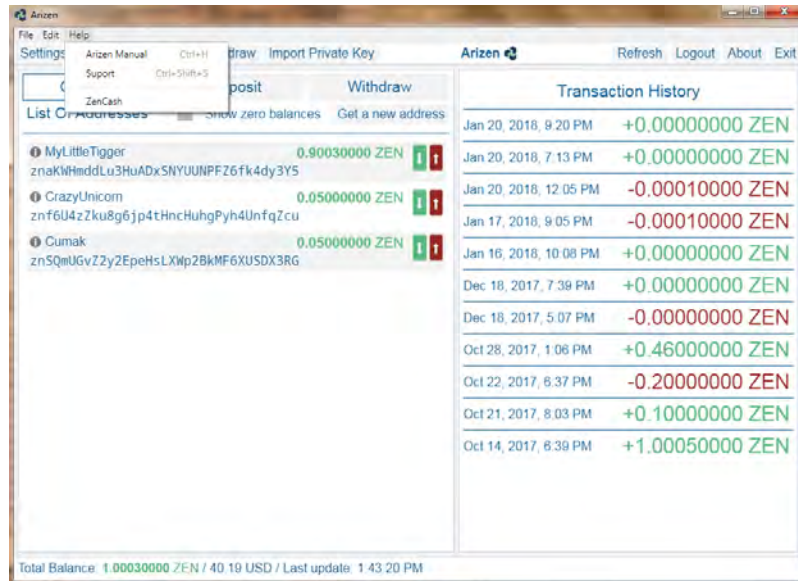


Figure 4.1: Option *Help* can direct you on Arizen Manual, Support or official Zen-Cash website.

4.2 About and thanks to the team

If you need some technical support, please, contact our developers and main contributors via Discord or via [Github](#)(which is preferable).

Have you found a bug? Would you like to recommend to us any new cool feature? Please let us know via [Github issue](#).

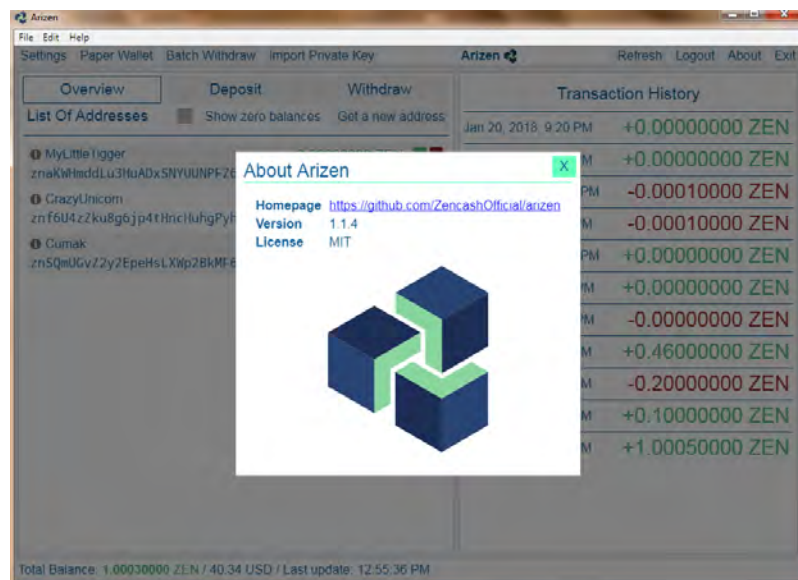


Figure 4.2: Option *About* shows you Homepage and version of your Arizen Wallet.

Many thanks belong to the Arizen Team who dedicated leisure time to develop the Arizen wallet v1.1.4. The biggest part of this is in hands of @lukas, @woky, @gsfakianakis, and @Tigger. Many thanks to people who help us to improve this project via Github issues and tasks. Peace♡